



Briercliffe with Extwistle Parish Council

www.briercliffe-pc.gov.uk

August 2024

Published by Briercliffe with Extwistle Parish Council - clerk@briercliffe-pc.gov.uk

Printed by www.helloprint.co.uk
100 Pall Mall, London SW1Y 5NQ

Welcome to the latest Parish Council Newsletter!

There's a lot of information here about the Council's work and what's happening in our communities and local groups.

I'm looking forward to meeting people at the Flower Show on the 24th. Let's hope it keeps growing in size and number of entries. Our thanks to the great volunteers who keep it going.

Thanks also to all our advertisers. They are helping to keep all our residents in touch with Briercliffe life and what's happening in our parish. Please support them with your business.

Good wishes and a happy summer to all Briercliffe residents and families.



Parish Council Chair
Gordon Lishman CBE

Briercliffe Battery Energy Storage System

Launch of consultation

Many will have received a flyer through the door regarding energy storage consultation.

Consultation will run Monday 22nd July to 23:59 on Friday 23rd August 2024

Amberside Energy Limited is developing proposals for a Battery Energy Storage System, located to the East of Briercliffe on land to the north of Halifax Road. The information received states BESS will enhance grid resilience and will be able to store enough energy to power 250,000 homes for two hours; enable integration of renewable energy sources; help generate more affordable and clean electricity... More information about the project at www.tinyurl.com/briercliffeenergy



Photo by Neil Matthews



An in-person consultation event is to be held on Thursday 8th August from 3pm to 7pm at Hill Lane Baptist Church

online virtual consultation will be available 24/7 through the consultation period

INSIDE THIS ISSUE	COMMUNITY CENTRE	ALLOTMENTS & GARAGES	BOUNDARY STONES
DOG MESS	PLANNING	LOCAL HISTORY-TEXTILES	ENERGY STORAGE SYSTEM
WEBSITE	BRIERCLIFFE COMMUNITY FC	LOVE CLEAN STREETS	MEET UP & CLEAN UP
GROUPS			

The History of Briercliffe-with-Extwistle

The history of Briercliffe is inextricably linked with that of the textile industry. Products made out of textiles, and for textiles, have been produced here for centuries. At first it was the wool industry which predominated but there is evidence that linen was made here before the introduction of cotton.



It is not only the making of textiles (spinning and weaving etc.) that has been important. Briercliffe has been home to a number of makers of textile accessories (shuttles, healds, reads and the like). A small dye works once operated on one of the two streams at Catlow Bottoms. A bobbin mill operated at Pighole, and, in more recent times, textile machines have been made in Harle Syke, at what was once Perseverance Works, now Cobden Street Garage - this building was founded by the Taylor family (hence New Taylor Fold) known as Harle Syke Forge before it became the garage that it is today.

Perhaps the most interesting is the discovery, off Walverden Road between Lane Bottom and Pighole, of some wooden bobbins which, it is believed, were made at Pighole Mill. They were stuffed into field walls, above Finney Moor Foot, and the discovery was made by a casual walker who wishes to remain anonymous. Further study confirmed that Pighole, and the area around it, is of special historical importance.

Bobbins were small wooden devices used in various stages of the textile process, including beaming, spinning and weaving. The mill where they were made still stands, on the Briercliffe bank of Walverden Water, though the name of the building has been changed. It is now known as "Fern Valley".

In the Censuses of the mid-nineteenth century, the mill is variously described as "Pighole or Peglar Mill", "... formerly a bobbin mill", but the building dates from the fifteenth century and was, originally, a corn mill.

The water, which drove the mill, was not taken from Walverden Water, but a small stream, rising directly to the south of the mill, provided the motive power.



The Pighole area itself was, and remains, perfect for bobbin making. The woods, either side of Walverden Water, are the remains of the native ancient woodland which once occupied the river valley. It was from local timber that the bobbins were made.

Cop Row, in Briercliffe, takes its name from what was made at the Bobbin Mill. Specifically the rows of cottages, between the Craven Heifer and the Commercial, which are collectively known as Cop (or Copp) Row. Bobbins were also known as "cops" and these cottages, some 40 of them originally, were built to house hand-loom weavers who would have made use of bobbins/cops when weaving cloth, both wool and cotton.

In the Briercliffe area hand loom weaving was usually carried out at first-floor level, but, when this was the case, there was a problem. How to get large, heavy beams of yarn into small one-up, one down cottages and how to get finished beams of cloth, even heavier, out? Internal stairs were usually too narrow, so the solution was to take beams directly to the first floors of a cottage. The cottages were linked together, by a series of doors, at first floor level, giving access to all of them.

At Cop Row the remains of a taking-in door, at first floor level, were revealed when work on the cottage was undertaken. In the gable end of a cottage, is the worn doorstep, lintel and two jambs of a perfectly normal door. Below the door, and outside the building, there would have been wide stone steps with, probably, a banister on at least one side.

At Haggate, once the most important hand-loom weaving village in the area, what has been revealed, when refurbishing, is the remains of some windows. Weaving can only be carried out in good light so local weaver's cottages have larger windows, sometimes joined together in long rows giving more light than was usually the case. The best weaver's windows in the district can be found at Haggate Hill End, though this property was owned by a small manufacturer rather than a handsome weaver.



A taking-in door, at first floor level, at a handloom weaver's cottage in Yorkshire, showing the stone steps that gave access to the doors

Briercliffe Community Centre - Jubilee St

From Anne Kelly. Chair and Treasurer



The Community Centre was opened in 1990 after years of fundraising by residents of Briercliffe. It is run by a small management committee of 4 people plus a cleaner and has recently been updated and refurbished. There are regular groups and weekend parties for children and it is well used and supported. The total income comes from lettings. The land it sits on belongs to Lancashire County Council and since the Library closed the County Council have decided to sell the whole plot of land at a value of c£80,000. A

survey has shown that the library building is unfit for any use and would need to be demolished. The Parish Council has explored possibilities but obviously hasn't got the funds to buy it and could not draw any income from it to repay a loan. We will continue to explore possibilities and consult with any prospective buyer.

Our Community Centre is a valuable asset to Briercliffe - we will try everything to keep it.

Ukelele group

Monday afternoons
contact Maureen
07790663961



Yoga

Mondays 6-7pm weekly
Contact Dave
07952 290253



Weekends are available for children's parties.
Contact Booking Agent,
Christine,
07879 052113



Blooming Briercliffe Garden Club
Garden Club - 4th Tuesday 7-8pm
You don't have to be knowledgeable, Just love gardens, flowers or vegetables!
Contact Pippa 07732446058

Wednesday Club

entertainment & afternoon tea
2nd and 4th Wednesdays
Contact Anne 07753 253040



Needle felting

2nd Tuesday each month, 1-4pm
& 3rd Wednesdays 6-9pm
Contact Anna 07704 197603



Pilates Wednesdays

6-7pm
Contact Isobel
07850 066390
Or just turn up



Fun and Games

Alternate Tuesdays, play board games, cards, tea and biscuits. Contact Gail 01282 931995 or just turn up



Parish Council meetings

Thursdays, see website for dates

Baby Club - New and expectant mothers support and chat, every Friday 1-3pm
Contact Alex 07379 288800



Oasis support and well-being group
Friday evenings 6.30
Just turn up



**Have you a hobby or interest and would like to get together with others?
contact the booking agent and start a new group!**

Briercliffe Community Football Club 2.0

We have been established since 2018 continuing the legacy of a football club being in the village for many years.



We have had a roller-coaster ride and faced many challenges but we stand tall and proud.

Briercliffe Community 2.0 is our club, working smarter, more efficient and remaining true to our core values. We are expanding with more teams, more players, experiencing a shift in staff and developing the clubhouse.

We are appealing to you! We need help with our weekly matches setting up, pitch maintenance, maintenance of our buildings and outdoor space.

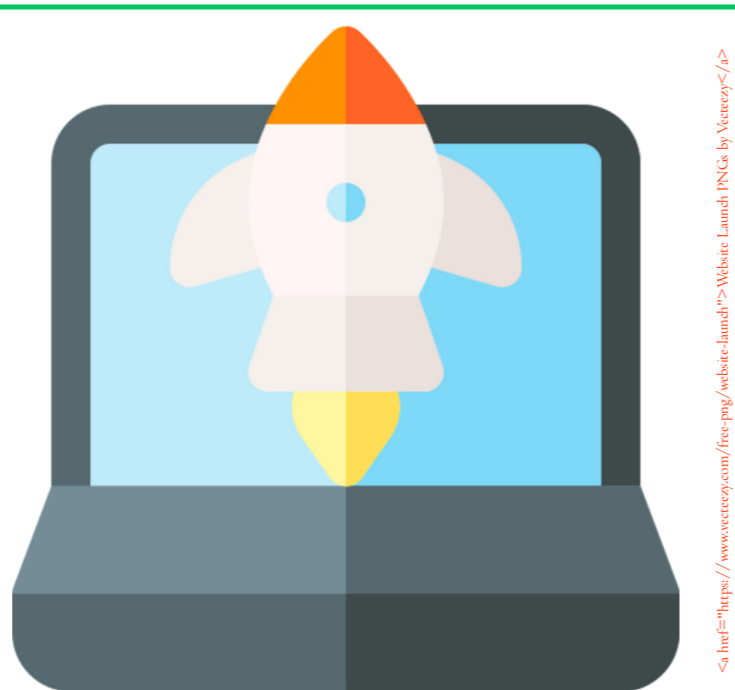
For further information on the role and others that we have please contact Louise on 07581624561 or email football@briercliffe.uk Website: www.briercliffe.uk



PLANNING - Briercliffe Parish Council is not a planning authority but we are consulted about applications both within Briercliffe and on its borders. The recent application for a large wedding facility at Rockwood, on Halifax Road, Nelson, in Pendle Borough Council remit, was considered by the Parish Council and decided to write a letter of **OBJECTION**. Ours was one of hundreds of letters and emails received by Pendle BC, we are pleased that the Pendle Planning Committee turned the application down. That does not end the story because the applicants can **APPEAL** the decision and, if they do, your Parish Council will certainly be involved.

Two other potential applications concern a very large wind farm at Widdop (Calderdale) & a solar panel farm which, if granted, would be located in Briercliffe. Both of these are not yet applications. The Parish Council had decided to wait until applications for them are submitted to know the full details before taking action.

We will monitor and be involved in the consultation for the potential new BESS development.



COME AND CHECK OUT OUR BRAND NEW WEBSITE, RENAMED AND REVAMPED TO ENHANCE YOUR EXPERIENCE! EXPLORE OUR LATEST FEATURES, UPDATED CONTENT, AND A SLEEK NEW DESIGN. WE CAN'T WAIT FOR YOU TO SEE THE IMPROVEMENTS!

VISIT US AT:

WWW.BRIERCLIFFE-PC.GOV.UK/

Briercliffe with Extwistle Parish Council Meetings, held in the Community Centre, Jubilee St

05 September 2024	06 February 2025
10 October 2024	06 March 2025
07 November 2024	03 April 2025
05 December 2024	08 May 2025 - Annual Parish & Parish Council Meetings
16 January 2025	

Briercliffe Parish Council own & manage the Allotment site between Burnley Road Turning Circle and the end of Harrison Street. We have 55 allotment gardens for cultivation and 50 allotment pens for livestock and cultivation. We also have a dozen garden extensions and several areas for livery and grazing. Additionally, we own and manage 60 garages, garage plots and containers on the turning circle, off Harrison St, and at the rear of Church St.

We have recently filled almost all Allotments, and have lots of new tenants busy growing and keeping chickens, ducks and rabbits.

Allotments & Garages



We have held a number of social events so tenants can come together and get to know their neighbours, share help, advice, tips & ideas.

The recent summer social BBQ saw tenants and families come together at the allotment office site.



The Allotment Society Sunday morning events welcome allotment tenants, enthusiasts and all local residents to share cake and a brew each Sunday morning during the regular growing season.

The last weekend in July brought together a small group of Councillors and Volunteers to tackle some major works on the Allotment site. Heavy Plant Machinery was hired and delivered with tons of stone. The team got underway with hardhats and hi-vis jackets, What a busy weekend, and what wonderful weather - we were very fortunate!

The main access was restricted as heavy machinery was working around the site all weekend. We dug the top layers away from a pathway,



which was becoming impassable during extreme poor weather, including further digging to extend and relay a water tap. This was then covered in weed suppressant and 20+ tonne of stone path, 'wacked' down to finish off.



A main drainage ditch has been cleared out and re-dug to ensure excess water can flow easily, and two grazing fields have been tractor mowed by a wonderful volunteer - for the cost of a can of Redbull! The drainage around the garages has been started by clearing the main soak away - more work will be required here and it will be continued.

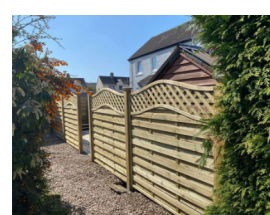
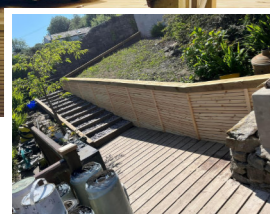
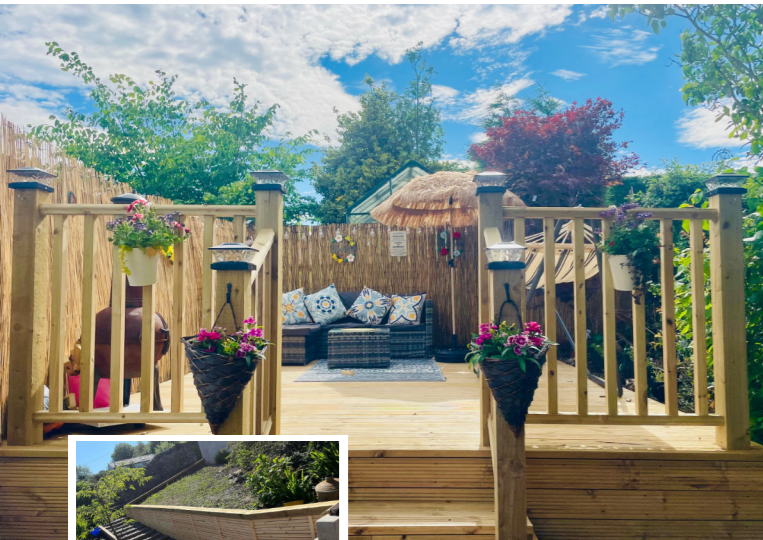
We filled in an unusable area of weeds with the soil removed, and extra soil from clearance of an area where there was dumping. Then layered stone was laid again to make an extended parking area for the influx of new tenants. Sadly the fencing that was to be around this area, has been delayed as the fence posts placed

waiting for the final stages of adding netting have been stolen, along with several other new posts around the site. This theft has been reported to the Police and further enquires are ongoing. A number of tenants have come forward with information and several people have asked if wildlife cameras can be installed, both by the Parish Council & tenants themselves to protect against further theft and a further current concern - it seems that summer holidays are bringing lots of younger people walking around the plots turning on taps and leaving them on - both wasting a value water resource & flooding vegetable plots and livestock areas. This has been reported to the police and we hope to have an increased local presence.

HUGE THANKS to everyone involved in the weekend, and the tasks over the coming weeks: special recognition to Michael, Pippa, John, Neil, Jennette, Kenny, Matty, Mick (great cup of tea!), NBC and everyone cheering & smiling us on.

If you might be interested in taking on an allotment, garage or garage plot, please contact the Parish Council to be added to the waiting lists





MJ' S FENCING & DECKING

Bespoke Designs to suit your garden



Contact Mick on :
 07951347793
 mjsfencinganddecking@gmail.com
 Visit: www.mjs-fencing-decking.com



Anna Leonard is a Felt Sculpture & mixed media Artist based in Briercliffe. Her work consists of 2D and 3D commissioned pieces, often of pets and wildlife.

With over 12 years experience with Needle felting, Anna now teaches groups this enjoyable craft.

Monthly sessions are now running at Briercliffe community centre. For more information on how to book contact :- Anna on 07704197603

Facebook :- Fabulous Felts by Anna Leonard

A LINGARD JOINERY

LINGARD
 Inspired Kitchens & Bedrooms

Services Provided:
 · Fitted Kitchens
 · Fitted Bedrooms
 · Internal Joinery

Contact Adrian on:
 07411175643
 or
 alingardjoinery on Facebook

THE
BRIERCLIFFE
ANNUAL
FLOWER SHOW

HAGGATE CHURCH HALL
 SATURDAY 24th AUGUST 2024
 2.00 pm – 4.30pm
 REFRESHMENTS AVAILABLE
 ADMISSION £1.00 CHILDREN 50p

Handicrafts, Confectionary, Flowers, Vegetables, Eggs and Childrens sections

Schedule of classes & Rules available at the Spar, the Village Pharmacy, on www.briercliffe-pc.gov.uk, or call any of the Show Committee members
 Mrs L HINTON - 128 Talbot Drive, 431837; Mrs C PATE - 67 Talbot Drive, 428206;
 Mrs J. BAILEY - 148 Lydgate, 435672

Entries and fees to C. Pate, 67 Talbot Drive, Briercliffe.
 No later than 9.00 pm Thursday, 22nd August 2024

Michael Greenwood

Servicing & Repairs

- Lawn Mowers
- Strimmers
- Hedge Cutters
- Chainsaws
- Rotavators
- Blade Sharpening
- Chainsaw Sharpening

07801794544
 greenwood.michael@ymail.com

Mobile Library

Lancashire County Council MOBILE LIBRARY
 on the bus turning circle, Burnley Rd

every three weeks on
 Thursdays, 12:15 to 13.00

If you want to contact the Home Library service
 ring 0300 123 6703

2024 Dates: 15th August 5th September 26th September 17th October
 7th November 28th November 19th December

2025 dates
 9th January 30th January 20th February

Want to advertise here?

Contact
 clerk@briercliffe-pc.gov.uk
 or Communications Lead Cllr
 Pippa Lishman - 07732446058

little legs

PUPPY SOCIALISING & SMALL BREEDS WALKED

Local dog walker in Briercliffe
 Puppies socialised and small breeds walked
 Small groups - all dogs wear trackers
 Pet taxi & pet visits

Contact Victoria for more information 07508 371780

Boundary stones & signs

Around Briercliffe we have 20 signs & stones, marking the different areas around the Parish and welcoming people across each boundary.

A number of local residents have taken on looking after many of the areas, including beautifully planting up each year.

Thank you to all those who continue to do this each year - what a wonderful job!



Can you find all 20 signs & marker stones?

Grounds Maintenance

The Council is looking at the best way to provide its service of looking after the allotments and doing other work around the village. Our previous contractor left and since then, we have had a temporary working doing basic grass-cutting around Harle Syke. All other tasks are being completed by volunteers including members of the Council. That includes planting, watering, dealing with 'grot spots' when we see them or they are reported, cutting back excess growth, and weeding.

STREET SAFE

StreetSafe is an online tool that lets people pinpoint on a map a place where they don't feel safe. It's available on the Police UK website: www.police.uk/streetsafe

It's a Government response to violence against women and girls and to identify areas where there are fears caused by Anti-Social Behaviour or environmental issues. Anyone with concerns about a particular location can flag it through the tool. It is very easy to use.

Information recorded will be considered alongside the extensive evidence base already gathered by police forces and used to inform the community safety activities of police and partner agencies such as local Councils.

StreetSafe allows you to report safety concerns in public places without giving your name. It includes issues like poorly lit streets, abandoned buildings, vandalism, as well as instances where you feel unsafe due to being followed or verbally abused.



Love Clean Streets

is the app to report problems about roads, green spaces, streets and rubbish to Burnley and the County Council. Download it free from your mobile's app store, Google, Play Store, and Apple iTunes Store.

DOG OWNERS BEWARE

Dog fouling is the most frequent complaint to Councillors. People ask for more signs but these don't make much difference. **All dog owners know that they should clean up and the dogs can't read!**

The biggest problems are on footpaths away from the main streets where dog owners think they won't be spotted, particularly on country footpaths, round the allotments, any grass area and especially on the path from Burnley Rd to Briercliffe School.



Not cleaning up after a dog is an offence and unfairly gives responsible owners a bad name. Burnley Borough Council has recently employed a new company to patrol and fine both dog owners and litter louts. They can issue fines up to £150 for each offence. They will be doing regular patrols round Briercliffe so: **Be Warned!**



If there is an area you know is bad, please report it online to Burnley Borough Council or let one of the Councillors know then we can get enforcement officers to come to the right place at the right time to catch the people responsible.

The Parish Council are looking to do regular checks and spraying the worst areas. The spray highlights just how disgusting an area is and also stops people from walking in it. It shames the dog owners into realising how bad the problem is when dozens of dogs are fouling the same area.

1st Sunday monthly 11am – 2pm

Meet up Clean up Briercliffe

Community litter pick

Meet @ Briercliffe Allotments / Garages at Harrison St.
 Wrap up warm with gloves, we will have rubbish bags and litter pickers and a place to return all the filled waste bags, even a brew and biscuit.

Children must be supervised at all times.

Contact Pippa Lishman for details pippa@lishman.co.uk 07732446058